



19 Chester Crescent, Newcastle Upon Tyne, NE2 1DH

£850 PCM

Available May 2026 | £850 per month | Hive Estates presents this superior and spacious 1 bedroom apartment with allocated parking. Featuring a large living room featuring a bay window, fully fitted modern kitchen, stylish tiled bathroom with bath and shower and generously sized double bedroom with fitted wardrobes and another bay window.

Hive Estates presents this superior and spacious 1 bedroom apartment with allocated parking. Featuring a large living room featuring a bay window, fully fitted modern kitchen, stylish tiled bathroom with bath and shower and generously sized double bedroom with fitted wardrobes.

This one bed apartment is on Chester Crescent, Sandyford. The apartment has gas central heating and laminate flooring throughout, with spotlighting in the kitchen and bathroom. It has been decorated to a high standard and offers a spacious lounge with dual windows, one being a bay, fully fitted kitchen with tiled floor, washing machine, integrated oven and hob/extractor and a fridge freezer. It benefits from a large double bedroom with fitted wardrobes also with a bay window and a well fitted bathroom with bath and walk in shower and heated towel radiator. The property is on the corner of Chester Crescent and Sandyford Road and is an ideal location for easy walking into the City Centre and the University. Allocated private parking is included within the rent out the front of the property, and there's shared garden with grass and patio space and bike storage.

WHAT TO DO NEXT?

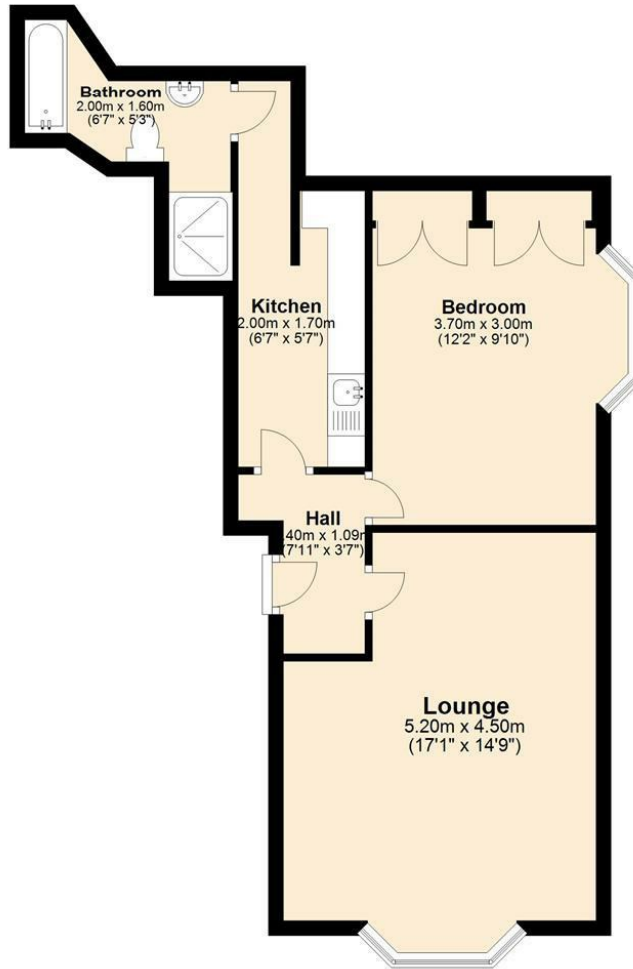
Contact the hive team to book a viewing either by calling the telephone number above or sending an email by completing the enquiry form on this page. We'll happily show you around at a time that suits you, and can even pick you up or drop you off. Any questions you have will be answered and you'll be explained the letting process in detail with us.

DISCLAIMER

All property photographs are copyrighted and must not be used without our permission. Whilst every care has been taken to ensure the accuracy of this property advert, we cannot guarantee this and potential tenants should seek clarification on all details before proceeding to rent a property with hive.

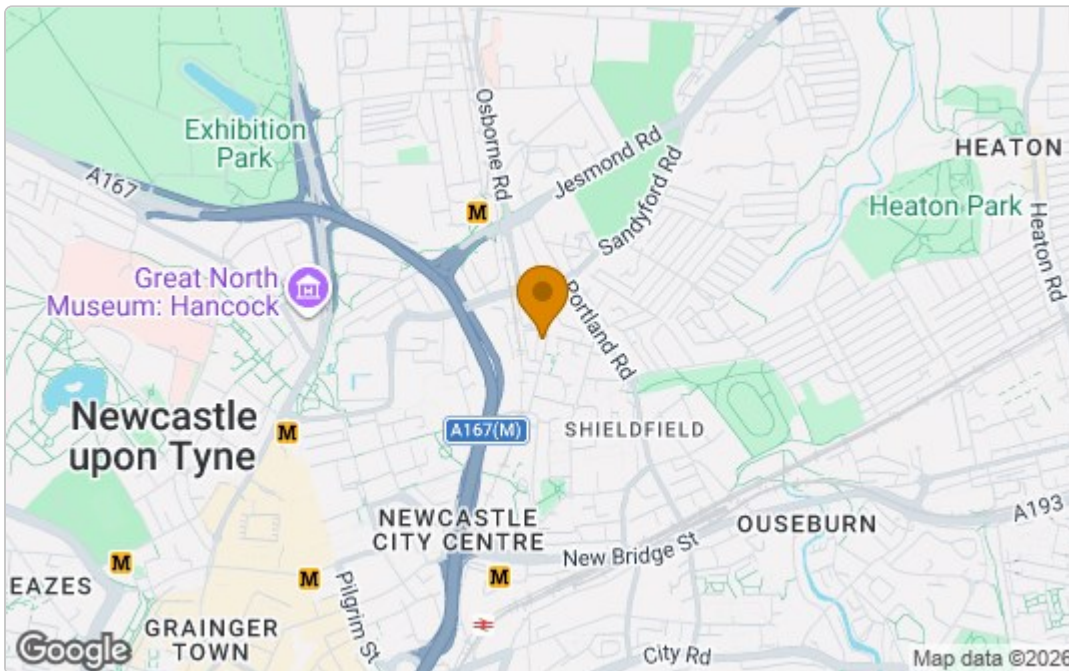
Ground Floor

Approx. 49.9 sq. metres (536.7 sq. feet)

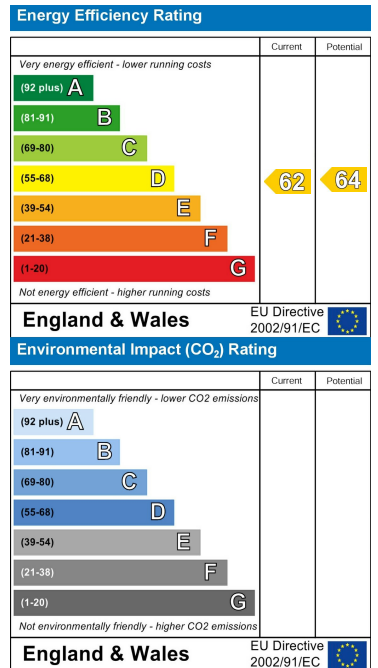


Total area: approx. 49.9 sq. metres (536.7 sq. feet)

Area Map



Energy Efficiency Graph



These particulars, whilst believed to be accurate are set out as a general outline only for guidance and do not constitute any part of an offer or contract. Intending purchasers should not rely on them as statements of representation of fact, but must satisfy themselves by inspection or otherwise as to their accuracy. No person in this firm's employment has the authority to make or give any representation or warranty in respect of the property.